



# Specialist Plant Associates

## Our Capabilities

Equipment Supply and Plant  
Engineering Services



# Contents

Introduction to Specialist Plant Associates	03
LIFE Safety Culture	04
SmartWaste	08
Grouting Equipment	10
Ventilation Systems	12
Dust Extraction / Collection	17
Shaft Jacking	19
Shaft Underpinning	21
Building Cages	22
Manriding / Working Cages	23
Muck Skips	24
Suspended Working Platform	25
Shaft Ladders	26
Pipework Systems	27
Air Receivers, Manifolds and Hoses	28
Hydraulic Power Packs	29
Heading Gear and Track	30
Hyperbaric Equipment	31
Microtunnelling Equipment	32
Design and Fabrication	34
Auger Boring	35



## About us

### Your Partner in Tunnelling, Construction and Civil Engineering Equipment Solutions

At Specialist Plant Associates, we provide trusted, high-performance equipment to the Tunnelling, Construction and Civil Engineering sectors. With decades of experience supporting complex infrastructure projects across the UK, we are proud to supply, manufacture and maintain an extensive range of specialist plant that helps our clients deliver safely, efficiently and on schedule.

Our expertise began in tunnelling, but our capabilities now span a wide range of Civil Engineering and Construction applications from Underground Ventilation and Grouting to Shaft Sinking and Plant Hire for confined spaces.

We combine technical excellence, reliability and a commitment to safety with responsive customer service and nationwide delivery. Whether you need hire, sales or bespoke engineering support, we'll work with you to find the right solution.

### Our Core Equipment Range

- **Ventilation Systems** – From 0.55kW to 75kW, with full ducting and de-dust units
- **Grouting and Pumping Equipment** – Including Uelzener S30 Grout and Mortar pumps
- **Pipework Systems** – UK agents for Svebra Galvanised Pipework and Victaulic Fittings
- **Shaft Jacking and Hydraulic Power Packs**
- **Personnel Cages, Skips and Settlement Tanks**
- **Battery Locomotives, Rail Bogies and Air Systems**
- **Hyperbaric Tunnelling Equipment**

### Built on Quality and Accreditation

We are certified to ISO 9001, 14001 and 45001 for design, manufacture, hire and supply, and hold RISQS accreditation for rail operations, giving our clients complete confidence in safety, compliance and quality.







## What is LIFE?

### Living Incident Free Everyday

**LIFE** is our industry-leading **behavioural culture**, developed over the past 10 years, with the goal that “everyone goes home incident-free every day.”

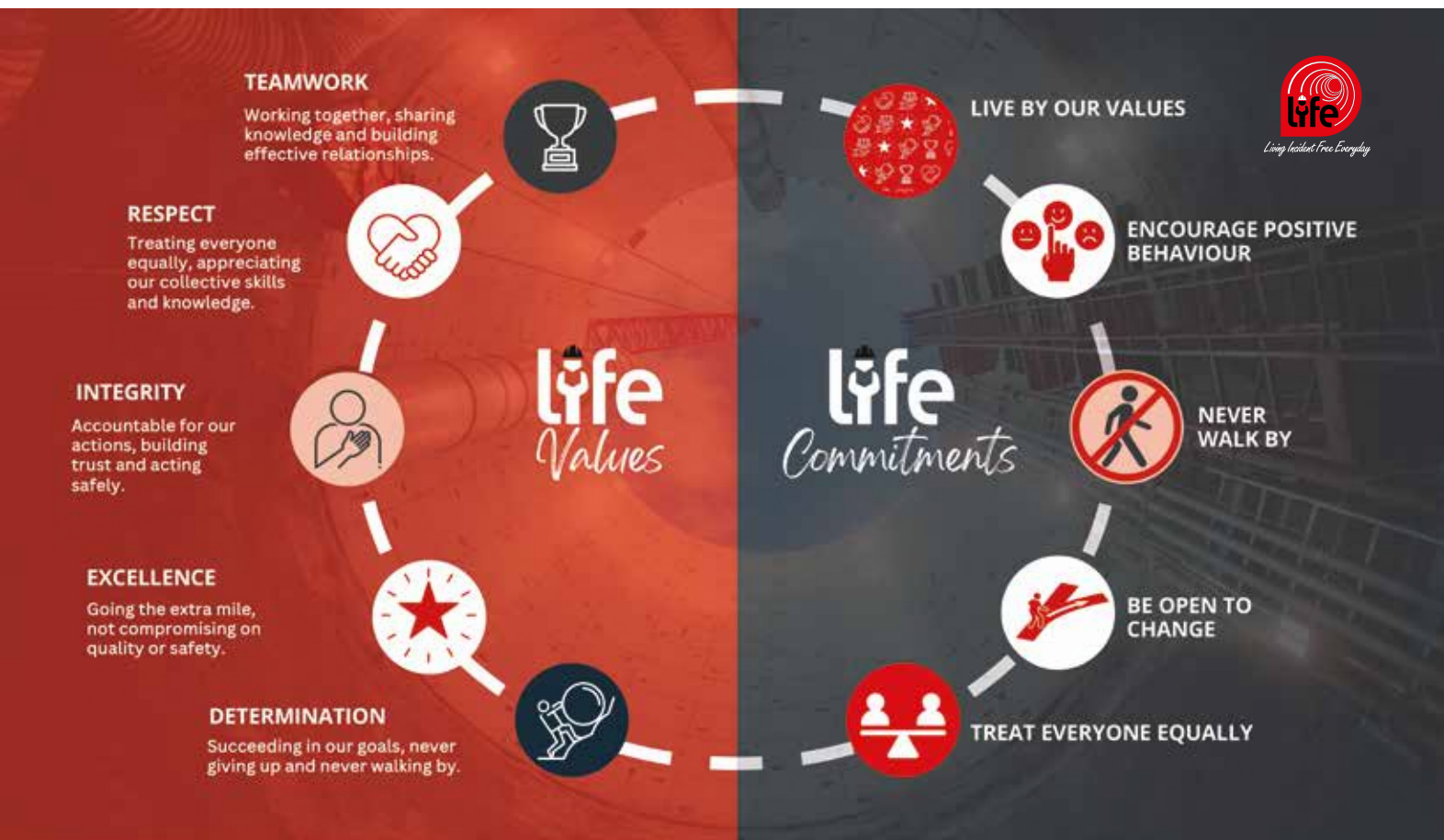
A philosophy where **everyone is responsible for living incident free everyday** - from stopping unsafe work to treating everyone equally.

The **LIFE programme** is led by our Chairman and Managing Director of the business and supported by the LIFE Leadership Team (LLT) and LIFE Champions across all sites.

**We firmly believe that, and are committed to ensuring that our LIFE culture will eliminate all incidents.**



“At the heart of the LIFE culture is a simple, unwavering commitment: everyone goes home safe to their loved ones every day. As your CEO, I am personally committed to ensuring that every member of our team has the support, tools, and environment needed to uphold this promise. Together, we will adapt, innovate, and continue to build a culture where wellness is not just a goal but a cornerstone of our values, guiding everything we do.”  
Steve Harvey, CEO





## LIFE Leadership Team

The **LIFE Leadership Team** plays a vital role in shaping the strategic direction of the LIFE Culture. Key points include:

- **Diverse Expertise**
- **Purpose and Direction**
- **Driving Improvement**
- **Role Models**
- **Flexibility**
- **Support**



## LIFE Champions

**LIFE Champions**, present on every project and site, are pivotal to the Joseph Gallagher Group. They promote the core principle of Living Incident Free Everyday while embodying our values: Teamwork, Respect, Integrity, Excellence, and Determination. Reporting to the LIFE Leadership Team and Project Managers, they act as **proactive ambassadors** for the LIFE culture by promoting SHEQ compliance, leading weekly LIFE meetings, addressing observations, sharing best practices, and driving cultural change across projects.

## LLT 2025 Roadmap

The **annual culture survey** is key to shaping the LIFE Leadership Team's yearly roadmap. By gathering feedback from employees, it highlights strengths, challenges, and areas for improvement. This insight helps the LLT prioritise initiatives, develop targeted programmes, and adapt strategies to meet the businesses evolving needs, ensuring meaningful change and continuous improvement.



## Best Practice Recognition Scheme

The Best Practice Awards recognise and motivate positive behaviours that align with company values and strengthen relationships for a high-performing culture. Awards are given for exceptional performance and excellence in core values, based on objective evidence from Observation Cards or LIFE Meetings.



## LIFE for our Clients

### Transforming Cultures Together

By partnering with Joseph Gallagher Group, you gain access to a safety culture model that is more than just a system - it's a philosophy. LIFE is the golden thread that weaves through everything we do, and we are passionate about helping our clients experience the same transformative results.

We support our clients by helping them to develop their own culture, tailoring the LIFE model to their unique needs and embedding core values into daily operations. Through industry-leading training, such as FIT for LIFE and Love for Life workshops, we empower employees and leaders to drive cultural change to Live Incident Free Everyday.

Tools like LIFE Moment Cards and colour profiling enhance team dynamics and communication, while recognition programmes, such as Best Practice Awards, motivate positive behaviours. Partnering with LIFE delivers enhanced performance, sustainable value, and industry-leading safety standards, transforming your organisation into an incident free workplace.



## LIFE in Action

**LIFE Workforce Engagements Workshops:** Regular training for all employees, cultivating a culture that lives by our values and strives for excellence.





# SmartWaste

SmartWaste is Specialist Plant Associates' comprehensive sustainability management platform designed to track and report key operational metrics, including energy consumption, emissions, waste management, and transportation. It provides detailed insights into resource usage and environmental impact, enabling informed decision-making and supporting compliance with sustainability standards. With features such as waste categorization, transport data analysis, and energy monitoring, SmartWaste helps identify reduction opportunities and set measurable targets. Its flexible reporting capabilities, weekly, monthly, quarterly, and annually ensure transparency and continuous improvement across projects.

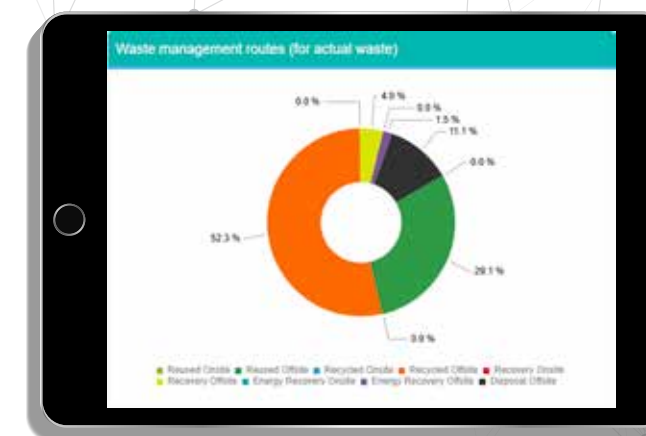
## Offsite Waste Management

SPA utilises the SmartWaste platform to record operational consumption, emissions, energy usage, waste management, and transportation data. This section of the dashboard focuses on actual waste sent offsite, managed through licensed waste contractors. Impressively, nearly 90% of total waste is diverted from landfill, reflecting SPA's strong commitment to sustainable waste management practices. This image below provides a detailed breakdown of waste by product group, offering valuable insights for informed decision-making and identifying key areas for waste reduction and minimization.

Actual waste sent offsite					
	Total (t)	3E100k	3/100m²	Diverted from landfill (t)	Diverted from landfill (%)
Construction	24.6	-	-	20.0	81.24
Demolition	0.0	-	-	0.0	0.00
Excavation	1.0	-	-	0.0	0.00
Modular	0.0	-	-	0.0	0.00
Post-Completion	165.7	-	-	149.7	90.29
Operational	3.6	-	-	3.6	100.00
Total (offsite):	195.0	-	-	173.3	88.87
Total (offsite & onsite):	195.0	-	-	173.3	88.87

## Waste Management Routes

The image on the right illustrates waste management routes in line with the Waste Hierarchy. Historically, 53% of waste is recycled offsite, 29.1% is reused offsite, and 4% is sent for recovery. Only 11% goes to disposal, demonstrating strong compliance with SPA's waste management standards and commitment to sustainability.



## Energy Usage

This section of the SPA SmartWaste Dashboard provides detailed insights into energy usage, including types of energy consumed and the associated emissions. It also allows us to track monthly emissions by source, covering both energy and fuel. These insights are critical for setting accurate reduction targets and driving continuous improvement in our sustainability performance.

Transport					
Total	kgCO <sub>2</sub> e	kgCO <sub>2</sub> e/100k	Distance Travelled (Kms)	Distance Travelled (Miles)	Fuel Consumption (litres)
Materials	15,721.5	-	38,169.9	23,717.9	4,682.2
Staff	2,517.2	-	12,889.2	8,009.0	954.8
Waste	6,476.3	-	6,249.7	3,863.4	1,870.8
Total	24,715.0	-	57,308.9	35,610.2	7,107.8

## Transportation Data

SmartWaste enables us to monitor transportation data for materials, staff, and waste, supporting efforts to create a more efficient and sustainable supply chain. It provides insights into transportation consumption, emissions, and travel distances, allowing for informed decision-making. Additionally, the system offers flexible reporting capabilities on a weekly, monthly, quarterly, and annual basis to track progress and drive continuous improvement.

# Grouting Equipment

## Smaller Mixers

For smaller volumes of grout or where more portability is required. Can be used with our Double Diaphragm Pumps or Skid-Mounted Mono-Pumps. Capacities available:

- 0.4m<sup>3</sup> (400L)
- 0.2m<sup>3</sup> (200L)



## Vertical Mixer / Pumps

Our most popular model, with large mixing pan and built-in pump with output pressure up to 12 bar. Air powered, giving infinitely variable speed. Can also be used for Bentonite / Sloop. Capacities available:

- 2.0m<sup>3</sup> (2000L)
- 1.0m<sup>3</sup> (1000L)

Available with grouting platforms to allow grout bags and operatives to be at the same height.



## Horizontal Mixer / Pumps

Skid-Mounted version of the mixer / pumps, more ideally suited for low headroom environments. Built-in pump with output pressure up to 12 bar. Can also be used for Bentonite / Sloop. Capacities available:

- 1.0m<sup>3</sup> (1000L)
- 0.6m<sup>3</sup> (600L)
- 0.4m<sup>3</sup> (400L)



## MD62 / MD72 Monopumps

Less versatile than the Double Diaphragm Pump, but capable of higher pressures (up to 12 bar). These are fitted as standard on our larger grout mixer / pumps, or can be supplied separately on skids if required.

## Double Diaphragm Pumps

Normally used in conjunction with smaller mixers, these popular Air Powered Pumps are simple and lightweight, and can deliver up to 7 bar output pressure.



## S30 Electric Mortar Mixer / Pump

For pumping mortars or 'gritty' grouts, with output pressures up to 35 bar. Electric drive (3-phase / 400V / 32A). Can be used with 35mm or 50mm High Pressure Mortar Hose.



## Grouting Accessories

We also supply most grouting accessories, including;

- 43 & 53mm expanding Grout Guns
- Triple start aluminium Grout Guns for McCann / Macrete segments.
- Grout hose (supplied at 1.5" with camlocks)
- In-line Grout Gauges

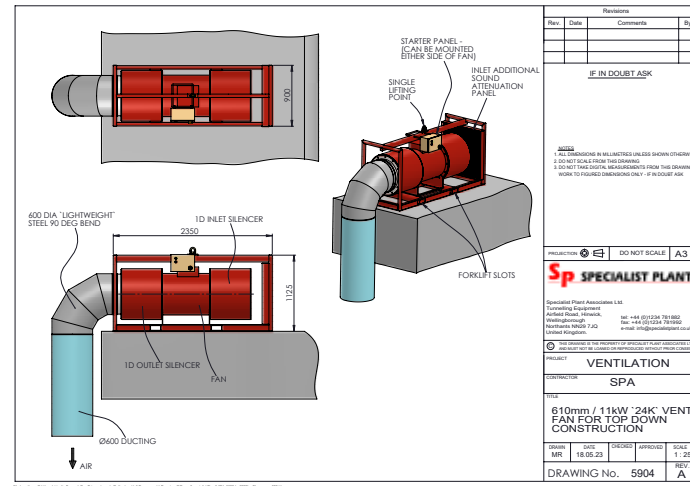


**Important:** Specialist Plant Associates grouting equipment is only to be used with cement / water and cement / PFA / water type grouts. Grouts containing any sand or aggregate, including specialist 'branded' grouts such as 'Conbextra' (or similar Fosroc / Tecroc products) must not be used as these will block or damage the equipment. Specialist Plant Associates can supply mortar mixer / pumps for these types of products.





Specialist Plant Associates supply robust temporary Ventilation Systems to suit any tunnelling, civil engineering or enclosed space application. This can include both ducted and un-ducted ventilation systems.



## Ventilation Design

With years of experience in ventilating tunnels, we can also offer a Ventilation Design Service, to ensure full compliance with latest UK standards for ventilation, dust, DEEEs, Radon etc.



# Ventilation Systems



## Ventilation Fans

Combined fan / silencer units for general, tunnel, and shaft ventilation.

- Available in sizes from 500mm - 1500mm
- Ducting available to suit

## 'Super-Silenced' Ventilation Fans

For projects where minimal noise plays a major role, these Ventilation Fans are housed in a 'super-silenced' enclosure to keep fan noise at an absolute minimum.

- Available in sizes from 500mm - 1200mm
- Ducting available to suit



## H.P. Centrifugal Fans

When using small diameter ducting (such as with pipe jacks), a higher pressure fan is often required. Centrifugal Fans are ideally geared towards this application.

- Duct runs as small as 100mm can be used
- Available in sizes 100mm - 150mm



## Jet Fans

If the tunnel is open at both ends, a Jet Fan can be used to maintain a consistent air flow throughout the tunnel. These fans run without ducting.

- Available in sizes 500mm - 1500mm



## 110V Portable Fans

Hand portable, featuring a rugged plastic casing ideally suited to site use. Fitted with a 16A plug for easy connection. Can be used with 12" flexible duct for general air movement.



## Air Movers

If a compressed air supply is available, Air Movers can be used to generate localised air movement without the need for an electrical power supply.



## Duct Lowering System (DLS)

- For forced ventilation systems only
- Duct pays out as cassette is winched down shaft
- 1000mm dia. duct in shaft
- Max. depth - 70m
- Twin winches for additional safety
- Can be mounted on portable / ballasted support frame to allow use on concrete jacketed / caisson jacked shafts.





# Ventilation Accessories



## Rigid Bends and Support Frames

Rigid Bends can be used in place of flexible ducting to maintain airflow and prevent duct collapse, particularly at the top of the shaft.

These can be attached to support frames to bolt the bend to either the floor (at the top of a shaft) or to segment linings.



## Anemometers

Used to measure air speeds.

- Hot Wire - Low speed range, high accuracy. Used to measure airflow speed in tunnels/headings.
- Vane Anemometer - Higher speed range. Used to measure airflow speed at duct outlets / fan inlets.



## Ducting

Semi-rigid fire-retardant, heavy duty ducting can be supplied to suit any application, whether that is suction or forced ventilation.

- SR-75/ 50 duct - Suited to suction ventilation
- SR-150 duct - Suited to forced ventilation
- Galvanised rigid ducting (upon request)

Catenary Wire, Wire Anchors, and Wire Rope Grips can also be supplied to support ducting.

## Variable Speed Drives (VSDs)

Specialist Plant Associates can supply ventilation fans equipped with VSDs, to give variable speed control and soft-start on high power fans.

# Dust Extraction / Collection



## MRDE 'Wet' De-Dust Unit

Heavy duty Wet-Type Dust Extraction units.

- Removes 99% of total dust
- Removes 94% of respirable dust
- Extracts up to 5.5 m<sup>3</sup>/ sec of air
- 11kW-37kW units available



## Dry 'W-Filter' Box

An alternative to the more cumbersome 'dry' de-dusting units, this de-duster uses coal board spec filter media to control and capture dust to reduce exposure levels. Sizes available:

- Up to 15m<sup>3</sup>/ sec (Ø800mm)
- Up to 30m<sup>3</sup>/ sec (Ø1200mm)  
(exact airflows will be dependent on fan)

## Dry Dust Filter Box

A simple design, the unit is used in conjunction with a standard Ventilation Fan to extract localised dust from source, and collect it within the unit using the high grade filter elements. This helps to keep dust at manageable levels within confined spaces.

- Extracts up to 10m<sup>3</sup>/ sec (dependent on fan)



## 300mm Fan / Filter Box

A smaller filter box, designed to be manually handled and easily manoeuvrable. The compact unit contains both fan and high grade filter element to collect dust locally. Ideal for smaller work sites where dust control is still critical.

- Extracts up to 1m<sup>3</sup>/ sec





# Dust Extraction / Collection



## DVH 10 'Wet' De Duster

The DVH De Duster uses a spray system to systematically 'wet' the dust, bonding it to the water, and scrubbing the air to remove both visible and respirable dust.

- Up to 94% de-dusting efficiency and dust capture
- Extracts up to 10m<sup>3</sup>/ sec of air



## DVS 10 'Dry' De Duster

The DVS De Duster uses a sequence of dust filters to capture the dust and remove it from the airflow. The dust is then blown free from the media using pulse jets, and captured and stored below the unit.

- Up to 99% de-dusting efficiency and dust capture
- Extracts up to 10m<sup>3</sup>/ sec of air



## Shaft Jacking

From 2.4m all the way up to 25m diameter, Specialist Plant Associates offer simple Jacking Systems which are easy to use and available for segments up to 1m in depth.

## 'T3' Shutter Jacking Tops

Jacking Tops designed to be used with Wrapped / Jacketed Shafts. A compact Jacking System, built using the same robust design as our Standard Jacks, these have a larger overhang to cater for the shutter and concrete wrap. Rams are jacked using hydraulic feed to / from a power pack.

'T3' Jacking Rams have an extended jacking range, with a stroke of 1500mm, and a maximum force of up to 40Te per top.





# Jacking Tops

Compact, robust design, with jacking forces of up to 40Te per top.

These are simply bolted to the base on the concrete collar, and fed with supply and return lines from one of our Hydraulic Power Packs.



# Jacking Bases

Sacrificial Jacking Bases are simply cast into the initial concrete collar before shaft jacking commences.

Jacking Tops are then bolted to the bases. This removes the need for casting pockets and HT bars used with some other systems.



# Hydraulic Power Packs

500 litre / 210 bar Air-Powered Hydraulic Power Packs.

Each power pack can be used with up to 12 jacks; additional power packs can be used for systems with more jacks.

Power Packs can be provided with an integral bund on request.



# Shaft Underpinning

Specialist Plant Associates now supply a number of Segment Lifting Frames to allow shaft sinking using the underpinning technique. Segments are secured, slung, and bolted in place whilst located on the underpinning frame. An offset lifting point helps prevent damage to segments by chains / crane block when working in deep shafts.

# Underpinning Frames

## Segment Underpinning Frame

Designed and tested in house, the Segment Lifter is designed to allow a maximum range of segments to be underpinned using a single design of frame. Segment restraint hooks and segment bolt hold the segment tight to the frame.

- Ø 5 - 25m diameter shafts
- SWL: 4000kg

Suitable for use with most standard segments.







# Building Cages

Specialist Plant Associates also manufacture and supply Building Cages for Shaft Jacking. These can be hung from the side of pre-built segments, and used to allow the team to fix the segment in place safely.



## Open-Topped Segment Building Cage

Favoured by many due to the ease to manoeuvre segments. Sizes available:

- Various sizes from 2.4m up to 4.0m
- Can also be used as a Suspended Working Cage

## Fully Enclosed Segment Building Cage

Fully enclosed Building Cages allow for a safer environment for those operating within the cage. Sizes available:

- Various sizes from 1.8m up to 4.0m
- Can also be used as a Suspended Working Cage



# Manriding / Working Cage

SPA manufacture and supply Manriding Cages fully compliant with current legislation and UK safety in Tunnelling standard BS6164, including the necessity for all manriders to be fully enclosed.

**We offer standard capacities of 1, 2, 4, 8, 12, and 16-man units, ensuring a solution for every requirement. In addition, we provide bespoke designs tailored to meet our clients' specific needs and specifications, delivering safe, efficient, and customised solutions for every project.**

### Manriding Cage features:

- Removable mesh panels to allow manriders to be used as a suspended working cage.
- Harness attachment points for when operating as working cages.
- Wire rope assemblies with secondary bonds (double bonded) fitted as standard.
- CE plated and BS6164 compliant (fully enclosed).

### Suspended Working Platform

Suspended working platform with a SWL of 2250kg.

- Dimensions - L5.75m X W2.2m.
- Minimum shaft diameter of 8.2m.
- Fitted with rubber tyred wheels to run on shaft wall.
- Removable gate to allow materials loaded on pallet.
- Harness attachment points for 4 men.



Capacity	Length	Width	Height	Additional Information
1 Person - SWL 125kg	0.65m	0.65m	2.3m	
2 Person - SWL 250kg	0.8m	0.8m	2.3m	
4 Person - SWL 500kg	1.0m	1.0m	2.3m	
8 Person - SWL 1000kg	1.6m	1.0m	2.3m	
12 Person - SWL 1500kg	2.4m	1.2m	2.3m	Can be used as an ambulance cage (Cage includes mouse hole for stretcher access/egress).
16 Person - SWL 2000kg	2.0m	2.0m	2.3m	Can be used as an ambulance cage or a cable installation cage.



# Muck Skips

## Bottom Opening Skips

Designed to be operated with a Low Head-Room Lifting Bridle (as shown). Available capacities:

- 1.0m<sup>3</sup> skip (SWL 1500kg)
- 1.5m<sup>3</sup> skip (SWL 3000kg)

Rail Bogies available for both sizes.



## Self-Tipping Shaft Skips

Available in a large range of sizes, with a simple, robust self-tipping mechanism which can all be done remotely by the crane operator. Capacities available:

- 2.0m<sup>3</sup> (MGW 5Te)
- 3.0m<sup>3</sup> (MGW 8Te)
- 5.0m<sup>3</sup> (MGW 13Te)
- 6.5m<sup>3</sup> (MGW 17.5Te)
- 8.0m<sup>3</sup> (MGW 20Te)

## Tunnel Skips

Fitted with lift-out removable end doors. Rail Bogies available for all sizes. Available capacities:

- 0.3m<sup>3</sup> (SWL 800kg)
- 0.43m<sup>3</sup> (SWL 1200kg)
- 0.5m<sup>3</sup> (SWL 1250kg)
- 0.8m<sup>3</sup> (SWL 1900kg)
- 1.0m<sup>3</sup> (SWL 2500kg)
- 1.4m<sup>3</sup> (SWL 3200kg)



# Suspended Working Platform



## Suspended Working Platform - SWL 2250kg

- Dimensions: L5.75m x W2.2m
- Minimum shaft dia. 8.2m
- Fitted with rubber tyred wheels to run on shaft wall
- Removable gate to allow materials loaded on pallet
- Harness attachment points for 4 men



## 16 Man / Cable Installation Cage

**16 Person Capacity - SWL 2000kg**

- Dimensions: L2.0m x W2.0m x H2.3m
- Can be used as a Manriding Cage / Working Cage / Rescue Cage or Cable Installation Cage (takes full cable drum on stands)



# Shaft Ladders

Our Shaft Ladders are purpose-built to provide reliable and secure access within vertical shafts, where space and safety are critical. Designed for confined environments, these ladders ensure smooth, uninterrupted entry and exit for inspection, maintenance, and emergency operations. Constructed from robust, corrosion-resistant materials, they deliver long-term performance even in harsh conditions. With precision engineering and compliance to stringent safety standards, our Shaft Ladders offer a dependable solution for accessing shafts efficiently and confidently.



# Pipework Systems

Specialist Plant Associates are the sole UK agent for the Svebra Lightweight Galvanised Pipework System which is 100% interchangeable (and largely identical to) the Alvenius System. We keep a large stock of pipework and fittings in stock at our depot for the 60mm, 102mm and 152mm sizes, available for next-day delivery.



## Victaulic Grooved Pipework System (OGS)

Specialist Plant Associates hold an extensive stock of 60.3mm and 114.3mm Victaulic Grooved System Pipework / Fittings.



## Gas Detectors

We provide Gas Detection Equipment for tunnelling and underground works, including Portable Personal Detectors and Fixed Monitoring Systems. These units measure and alert for hazardous gases such as methane, carbon monoxide, and oxygen levels, supporting compliance with safety regulations and protecting operatives in confined environments.





# Air Receivers, Manifolds and Hoses

## Vertical Air Receivers

We have an extensive fleet of Air Receivers for use with our Grouting Equipment, with Air Tools, or any other purpose. All receivers are 11 bar MWP unless otherwise specified. Sizes available:

- 250 litres to 10,500 litres
- Standard Air Receiver: 900 litres c/w multiple outlets

We can also supply Horizontal Receivers, should these be better suited to the application.



## Air Manifolds

Two types available;

- Free-standing Manifold with 2" inlet / outlet and Pressure Gauge
- In-line Manifold with 102mm Svebra ends

All Manifolds have;

- 4 x 3/4" outlets as standard
- SWP 11 bar
- Hydrotested and air tested
- CE plated



# Hydraulic Power Packs

Specialist Plant Associates can supply a number of different types of Hydraulic Power Pack, both Air Powered or Electro-Hydraulic.



## Air / Hydraulic Power Pack

The standard Power Pack, this unit has an air motor drive and is used for most applications.

- 7.5kW air motor / max. 210 bar



## Electric / Hydraulic Power Pack

For applications where an air supply isn't possible, or Electric Power is simply more preferable.

- 30kW / max 210 bar
- 30kW / max 350 bar

Pedestal mounted control valves available.

## Air Hose and Accessories

We can supply the following accessories for both hire and sale.

- 1.5" Air Hose x 20bar c/w BSP Swivel Nut / Tail Ends
- 2.0" Air Hose x 20bar c/w BSP Swivel Nut / Tail Ends
- Whip Restraints (0.5" - 1.25") or (1.5" - 3")

## Hydraulic Rams

Specialist Plant Associates can supply Hydraulic Cylinders in a range of sizes and pressures. Please call the SPA office for more details.



# Heading Gear and Track

Track, Skips, and Bogies can all be supplied in a range of sizes and specifications, but with 18" gauge specifically (though not exclusively) in mind.

## Heading Skips

Ideal for working within small headings, with lift-out end door for ease of emptying. Low headroom Rail Bogie available to suit. Available sizes:

- 0.3m<sup>3</sup> (SWL 800kg)
- 0.43m<sup>3</sup> (SWL 1200kg)



## Bogies

Available in varying sizes, with three pre-dominant styles:

- Standard Rail Bogies - 457mm / 610mm gauge
- 'Low-headroom' Bogies - 457mm gauge
- Braked 'link' Bogies - 457mm / 610mm gauge



## Track

Track and rail available in the following sizes and weights.

- 457mm gauge - 'Jubilee' Track Panels / Fishplates / Bolts
- 610mm gauge - 35lb Rail / Sleepers / Fishplates / Bolts
- Slide Rails - 457mm gauge
- Turnouts - 457mm / 610mm gauge
- Turntables - 457mm / 610mm gauge



# Hyperbaric Equipment

We specialise in delivering advanced hyperbaric solutions for the tunnelling industry, ensuring safety, efficiency, and compliance in high-pressure environments. Our services include the provision of hyperbaric chambers, supporting interventions such as compressed air works, maintenance, and emergency procedures within tunnel construction projects.

From planning, design and technical support, we provide a complete package designed to meet the rigorous demands of modern tunnelling. Our experienced team works closely with contractors to deliver controlled, reliable hyperbaric environments that protect personnel and maintain project timelines. Whether for planned interventions or rapid-response requirements, we combine engineering excellence with uncompromising safety standards.

Specialist Plant Associates have a wide range of Hyperbaric Tunnelling Equipment available for hire for many tunnel based applications, including TBM cutterhead interventions.

### Hire and Supply of:

- Medical Decompression Chambers
- Air Filtration Containers
- Tunnel / TBM Pressure Control Units and Filter Packs
- Tunnel Airlocks / Tunnel Bulkheads
- Secure Oxygen Transport System (SOTS) Cages
- Oxygen / Trimix Breathing Systems







## Microtunnelling Equipment

Specialist Plant Associates offers a comprehensive range of Microtunnelling Equipment, supporting trenchless installations across a wide range of diameters and ground conditions.

With decades of experience and a strong technical foundation, SPA is equipped to support even the most complex microtunnelling projects. Whether you're planning a utility installation, sewer upgrade, or major infrastructure crossing, our team can advise on the right setup and provide high-performance systems ready for immediate deployment.

### Iseki MTBM's

As the authorised European dealer for Iseki Microtunnelling, Specialist Plant Associates supplies a complete range of Iseki MTBM systems for pipe diameters from 250mm up to 3000mm. This includes the TCP/TCC Unclemole, TCS Unclemole Super, and TCM Crunchingmole models. We also provide all associated support equipment - such as Separation Plants, Slurry Pumps, Jacking Rigs, and Bentonite Mixing Systems - along with expert technical support, offering fully integrated microtunnelling solutions.



### Herrenknecht AVN's

Specialist Plant Associates owns and hires out a fleet of Herrenknecht AVN Microtunnelling Machines, ranging from 900mm to 2700mm ID. Our extensive experience with these systems allows us to support complex projects with high-performance equipment and matching support systems, including Separation Plants, Tanks, and Slurry Handling Gear. Whether for short drives or demanding infrastructure crossings, we provide reliable Herrenknecht equipment backed by knowledgeable on-site support.







## Design and Fabrication

Specialist Plant Associates combine in-house engineering expertise with practical, hands-on experience to deliver innovative plant solutions tailored to the unique demands of complex infrastructure projects.

### Design and Manufacturing Excellence

At SPA our design and manufacturing capabilities allow us to create bespoke equipment and modifications that enhance safety, improve performance, and drive efficiency on site.

Our team works closely with project engineers and delivery teams to fully understand operational challenges. From early design concepts to fully engineered solutions, we apply creativity, precision, and technical rigour at every stage. Whether it's custom-built lifting equipment, tunnelling support structures, or site-specific adaptations, we engineer solutions that are robust, compliant, and built to last.



## Auger Boring

Specialist Plant Associates offers a comprehensive range of Auger Boring Solutions supported by an extensive selection of Heads and Casings ranging from 219mm to 770mm OD. Our fleet includes both Guided and Unguided Auger Rigs, enabling us to deliver precise, reliable and efficient installations across a wide variety of ground conditions and pipe diameters.

SPA have recently invested in a BM800 Guided Auger Bore Rig, expanding our Auger Boring capability even further. This machine enables guided installations for pipes up to 1600mm OD, significantly increasing the range of larger-diameter trenchless solutions we can offer.

### American Augers 48-600 (Unguided)

A simple and reliable Auger Boring Rig designed for use with pipes up to 48" / 1220mm. This machine is powered by a robust 3-cylinder diesel engine, making it ideal for straightforward, unguided bore installations.

### Bohrtec BM400-2100 Guided Auger Rig

A compact guided Auger System suitable for shafts with a minimum internal diameter of 2.1m. This rig delivers accurate guided bores and is capable of installing pipes up to 620mm OD.

### Bohrtec BM400 LS Guided Auger Rig

A long-frame guided Auger Rig offering enhanced reach and stability. This system supports pipe installations up to 980mm OD, making it suitable for a wide range of guided boring applications.

### Perforator PBA155 Guided Auger Rig

A high-performance, long-frame guided Auger Rig capable of installing pipes up to 1080mm OD. Designed for precision and efficiency, it is well suited to complex guided bore requirements.







# Specialist Plant Associates

